

Legacy Portfolio

CLASSICAL LIGHTING

PRECIOSA

INDEX *overview*

Families & Typologies

Group	Family	Chandelier	Ceiling Chandelier	Ceiling Lamp	Wall Sconce	Table Lamp	Floor Lamp
Crystal Cut	PETRIN	■			■		
Crystal Cut	VINOHRADY	■			■		
Crystal Cut	BLANIK	■			■		
Crystal Cut	VOLARY	■			■		
Crystal Cut	JABLONEC	■			■		
Crystal Cut	JESTED	■			■		
Crystal Cut	HARRACHOV	■					
Crystal Cut	SENOV	■			■		
Crystal Cut	PLAVY	■			■		
Metal & Glass Arm	BARON	■			■		
Metal & Glass Arm	ROI	■			■	■	■
Glass Arm	VLTAVA	■			■		
Glass Arm	AMELIE	■			■		
Glass Arm	AMADEUS	■			■		
Glass Arm	LA SCALA	■			■		
Glass Arm	ODETTA	■			■		
Glass Arm	HUMPRECHT	■			■		
Glass Arm	TOURBILLON	■					
Brilliant	1196		■				
Brilliant	0524 / BORDURA		■				
Brilliant	0933		■		■		
Brilliant	1216 / HELIX		■	■	■		
Brilliant	1049 / ROSCA				■		

Group	Family	Chandelier	Ceiling Chandelier	Ceiling Lamp	Wall Sconce	Table Lamp	Floor Lamp
Brilliant	1030 / TAMBOUR		■		■		
Brilliant	0775		■				
Brilliant	0721 / BROLY		■		■		
Brilliant	0915		■		■		
Brilliant	3202		■				
Brilliant	3449	■					
Brilliant	0590	■			■		
Brilliant	0952	■			■		
Brilliant	0798 / FRATERNITE	■			■		
Brilliant	1081		■		■		
Brilliant	0991		■				
Brilliant	3305				■		
Brilliant	0914		■		■		
Brilliant	0757		■		■		
Brilliant	3713		■				
Brilliant	3029 / CVIKOV		■				
Brilliant	5004 / FLOE		■	■			

PRECIOSA

CRYSTAL CUT

PETRIN

Chandeliers & Wall sconces



PRECIOSA



Chandeliers

SAP no.	Dimensions (cm)			Weight (kg)	Metal / surface finish	Glass / surface finish	Trimmings / surface finish	Light sources	Wattage
	↔	↑	↓						
3265666	↔61	↑62		12	chrome	crystal	crystal	6× E14 / 40 W	240 W
3265685	↔84	↑94		17	chrome	crystal	crystal	12× E14 / 40 W	480 W



Wall sconces

SAP no.	Dimensions (cm)			Weight (kg)	Metal / surface finish	Glass / surface finish	Trimmings / surface finish	Light sources	Wattage
	↔	↑	↓						
3265650	↔38	↑45	↓19	3	chrome	crystal	crystal	2× E14 / 40 W	80 W

The SAP numbers given are for European electrical systems only. Candle dimensions differ depending on the electrical certification.

CRYSTAL CUT

VINOHRADY

Chandeliers & Wall sconces



PRECIOSA



Chandeliers

SAP no.	Dimensions (cm)			Weight (kg)	Metal / surface finish	Glass / surface finish	Trimmings / surface finish	Light sources	Wattage
	↔	↑	↓						
3265804	↔61	↑62		10	chrome	crystal	crystal	6× E14 / 40 W	240 W
3319431	↔61	↑62		10	chrome	black	crystal	6× E14 / 40 W	240 W
4332199	↔84	↑94		14	chrome	crystal	crystal	12× E14 / 40 W	480 W
3296467	↔84	↑94		14	chrome	black	crystal	12× E14 / 40 W	480 W



Wall sconces

SAP no.	Dimensions (cm)			Weight (kg)	Metal / surface finish	Glass / surface finish	Trimmings / surface finish	Light sources	Wattage
	↔	↑	↓						
4332123	↔38	↑38	↑19	2	chrome	crystal	crystal	2× E14 / 40 W	80 W
3297810	↔38	↑38	↑19	2	chrome	black	crystal	2× E14 / 40 W	80 W

The SAP numbers given are for European electrical systems only. Candle dimensions differ depending on the electrical certification.

CRYSTAL CUT

BLANIK

Chandeliers & Wall sconces



PRECIOSA



Chandeliers

SAP no.	Dimensions (cm)			Weight (kg)	Metal / surface finish	Glass / surface finish	Trimmings / surface finish	Light sources	Wattage
	↔	↑	↓						
4283432*	↔69	↑87	↓	13	polished brass	crystal	crystal	10× E14 / 40 W	400 W
4283533*	↔69	↑87	↓	13	white matte	crystal	crystal	10× E14 / 40 W	400 W
4283579*	↔69	↑87	↓	13	light blue matte	crystal	crystal	10× E14 / 40 W	400 W
3235562‡	↔69	↑87	↓	13	chrome	crystal	crystal	10× E14 / 40 W	400 W
4285304*	↔69	↑87	↓	13	white matte	crystal	crystal	10× E14 / 40 W	400 W

* Length of candle tube 150 mm | ‡ Length of candle tube 102 mm



Wall sconces

SAP no.	Dimensions (cm)			Weight (kg)	Metal / surface finish	Glass / surface finish	Trimmings / surface finish	Light sources	Wattage
	↔	↑	↓						
3235556	↔34	↑40	↓27	2	chrome	crystal	crystal	3× E14 / 40 W	120 W

The SAP numbers given are for European electrical systems only. Candle dimensions differ depending on the electrical certification.

CRYSTAL CUT

VOLARY

Chandeliers & Wall sconces



PRECIOSA



Chandeliers

SAP no.	Dimensions (cm)			Weight (kg)	Metal / surface finish	Glass / surface finish	Trimmings / surface finish	Light sources	Wattage
4030754	↔52	↑55		7	chrome	crystal	crystal	6× E14 / 40 W	240 W
4030909	↔65	↑80		11	chrome	crystal	crystal	12× E14 / 40 W	480 W
4031075	↔84	↑100		19	chrome	crystal	crystal	24× E14 / 40 W	960 W



Wall sconces

SAP no.	Dimensions (cm)			Weight (kg)	Metal / surface finish	Glass / surface finish	Trimmings / surface finish	Light sources	Wattage
4030667	↔30	↑21	↑37	2	chrome	crystal	crystal	2× E14 / 40 W	80 W

The SAP numbers given are for European electrical systems only. Candle dimensions differ depending on the electrical certification.

CRYSTAL CUT

JABLONEC

Chandeliers & Wall sconces



PRECIOSA



Chandeliers

SAP no.	Dimensions (cm)			Weight (kg)	Metal / surface finish	Glass / surface finish	Trimmings / surface finish	Light sources	Wattage
	↔	↑	↓						
3235635	↔75	↑98		20	chrome	crystal	crystal	8× E14 / 40 W	320 W
3235472	↔90	↑100		25	chrome	crystal	crystal	12× E14 / 40 W	480 W



Wall sconces

SAP no.	Dimensions (cm)			Weight (kg)	Metal / surface finish	Glass / surface finish	Trimmings / surface finish	Light sources	Wattage
	↔	↑	↓						
3235025	↔41	↑55	↓27	4	chrome	crystal	crystal	2× E14 / 40 W	80 W

The SAP numbers given are for European electrical systems only. Candle dimensions differ depending on the electrical certification.

CRYSTAL CUT

JESTED

Chandeliers & Wall sconces



PRECIOSA



Chandeliers

SAP no.	Dimensions (cm)			Weight (kg)	Metal / surface finish	Glass / surface finish	Trimmings / surface finish	Light sources	Wattage
3211140	↔78	↑65		15	chrome	crystal	-	6× E14 / 40 W	240 W
3211163	↔90	↑110		26	chrome	crystal	-	12× E14 / 40 W	480 W



Wall sconces

SAP no.	Dimensions (cm)			Weight (kg)	Metal / surface finish	Glass / surface finish	Trimmings / surface finish	Light sources	Wattage
3211138	↔50	↑43	↑26	4	chrome	crystal	-	2× E14 / 40 W	80 W

The SAP numbers given are for European electrical systems only. Candle dimensions differ depending on the electrical certification.

CRYSTAL CUT

HARRACHOV

Chandeliers



PRECIOSA

*Chandeliers*

SAP no.	Dimensions (cm)		Weight (kg)	Metal / surface finish	Glass / surface finish	Trimmings / surface finish	Light sources	Wattage
3326369	↔105	↑66	30	chrome	crystal	crystal	18× E14 / 40 W 2× G9 / 25 W	770 W
4050323	↔105	↑66	30	polished brass	honey	honey	18× E14 / 40 W	720 W

The SAP numbers given are for European electrical systems only. Candle dimensions differ depending on the electrical certification.

CRYSTAL CUT

SENOV

Chandeliers & Wall sconces



PRECIOSA



Chandeliers

SAP no.	Dimensions (cm)			Weight (kg)	Metal / surface finish	Glass / surface finish	Trimmings / surface finish	Light sources	Wattage
	↔	↑	↓						
3235587	↔61	↑58		7	chrome	crystal	crystal	6× E14 / 40 W	240 W
3360311	↔61	↑58		7	chrome	crystal	black	6× E14 / 40 W	240 W
3922292	↔61	↑58		7	polished brass	honey	honey	6× E14 / 40 W	240 W
3235575	↔65	↑69		9	chrome	crystal	crystal	9× E14 / 40 W	360 W
3327489	↔65	↑69		9	chrome	crystal	black	9× E14 / 40 W	360 W



Wall sconces

SAP no.	Dimensions (cm)			Weight (kg)	Metal / surface finish	Glass / surface finish	Trimmings / surface finish	Light sources	Wattage
	↔	↑	↓						
3235658	↔30	↑36	↓20	2	chrome	crystal	crystal	2× E14 / 40 W	80 W
3327510	↔30	↑36	↓20	2	chrome	crystal	black	2× E14 / 40 W	80 W

The SAP numbers given are for European electrical systems only. Candle dimensions differ depending on the electrical certification.

CRYSTAL CUT

PLAVY

Chandeliers & Wall sconces



PRECIOSA



Chandeliers

SAP no.	Dimensions (cm)			Weight (kg)	Metal / surface finish	Glass / surface finish	Trimmings / surface finish	Light sources	Wattage
	↔	↑	↓						
4114076	↔55	↑44		5	polished nickel	crystal	crystal	6× E14 / 40 W	240 W
3461289	↔55	↑44		5	polished brass	crystal	crystal	6× E14 / 40 W	240 W
4171884	↔63	↑44		8	polished nickel	crystal	crystal	10× E14 / 40 W	400 W
3461290	↔63	↑44		8	polished brass	crystal	crystal	10× E14 / 40 W	400 W



Wall sconces

SAP no.	Dimensions (cm)			Weight (kg)	Metal / surface finish	Glass / surface finish	Trimmings / surface finish	Light sources	Wattage
	↔	↑	↓						
4171834	↔30	↑21	↑17	1	polished nickel	crystal	crystal	2× E14 / 40 W	80 W
3311301	↔30	↑21	↑17	1	polished brass	crystal	crystal	2× E14 / 40 W	80 W

The SAP numbers given are for European electrical systems only. Candle dimensions differ depending on the electrical certification.

METAL & GLASS ARM

BARON

Chandeliers & Wall sconces



PRECIOSA



Chandeliers

SAP no.	Dimensions (cm)			Weight (kg)	Metal / surface finish	Glass / surface finish	Trimmings / surface finish	Light sources	Wattage
	↔	↑	↓						
3300737	↔82	↑63		25	silver colour	crystal	crystal	12× E14 / 40 W 1× E27 / 40 W	540 W
3299567	↔82	↑63		25	gold colour	crystal	crystal	12× E14 / 40 W 1× E27 / 60 W	540 W



Wall sconces

SAP no.	Dimensions (cm)			Weight (kg)	Metal / surface finish	Glass / surface finish	Trimmings / surface finish	Light sources	Wattage
	↔	↑	↓						
3302305	↔10	↑28	↑25	1	silver colour	crystal	crystal	1× E14 / 40 W	40 W
3370586	↔10	↑28	↑25	1	gold colour	crystal	crystal	1× E14 / 40 W	40 W

The SAP numbers given are for European electrical systems only. Candle dimensions differ depending on the electrical certification.

METAL & GLASS ARM

ROI

Chandeliers & Wall sconces & Table lamps & Floor lamps



PRECIOSA



Chandeliers

SAP no.	Dimensions (cm)		Weight (kg)	Metal / surface finish	Glass / surface finish	Trimmings / surface finish	Light sources	Wattage
4088218	↔55	↑45	17	gold colour	crystal	crystal	5× E14 / 40 W	200 W
4146687	↔55	↑45	17	silver colour	crystal	crystal	5× E14 / 40 W	200 W
4047722	↔55	↑45	17	gold colour	crystal	honey	5× E14 / 40 W	200 W
4046059	↔65	↑50	20	gold colour	crystal	crystal	8× E14 / 40 W	320 W
3982742	↔65	↑50	20	silver colour	crystal	crystal	8× E14 / 40 W	320 W
3414212	↔65	↑50	20	gold colour	crystal	honey	8× E14 / 40 W	320 W
4284466	↔65	↑50	14	partly 24k gold plated	crystal	crystal	8× E14 / 40 W	320 W
3372844	↔78	↑58	23	gold colour	crystal	honey	12× E14 / 40 W	480 W
4146485	↔78	↑58	23	silver colour	crystal	crystal	12× E14 / 40 W	480 W
4285332	↔78	↑58	23	silver colour	crystal	crystal	12× E14 / 40 W	480 W

The SAP numbers given are for European electrical systems only. Candle dimensions differ depending on the electrical certification.

*Chandeliers*

SAP no.	Dimensions (cm)		Weight (kg)	Metal / surface finish	Glass / surface finish	Trimmings / surface finish	Light sources	Wattage
3299666	↔112	↑68	33	gold colour	crystal	crystal	18× E14 / 40 W	720 W
3300512	↔112	↑68	33	silver colour	crystal	crystal	18× E14 / 40 W	720 W
3333855	↔112	↑68	33	gold colour	crystal	honey	18× E14 / 40 W	720 W
3939993	↔125	↑75	77	gold colour	crystal	honey	24× E14 / 40 W	960 W
3430369	↔152	↑88	80	gold colour	crystal	crystal	40× E14 / 40 W	1600 W
3425165	↔152	↑88	80	silver colour	crystal	crystal	40× E14 / 40 W	1600 W

The SAP numbers given are for European electrical systems only. Candle dimensions differ depending on the electrical certification.



Wall sconces

SAP no.	Dimensions (cm)			Weight (kg)	Metal / surface finish	Glass / surface finish	Trimmings / surface finish	Light sources	Wattage
	↔30	↑27	↑23						
3381322	↔30	↑27	↑23	3	gold colour	crystal	crystal	2× E14 / 40 W	80 W
3282621	↔30	↑27	↑23	3	silver colour	crystal	crystal	2× E14 / 40 W	80 W
3372840	↔30	↑27	↑23	2	gold colour	crystal	honey	2× E14 / 40 W	80 W
3991067	↔30	↑38	↑23	4	gold colour	crystal	honey	3× E14 / 40 W	120 W



Table lamps

SAP no.	Dimensions (cm)		Weight (kg)	Metal / surface finish	Glass / surface finish	Trimmings / surface finish	Light sources	Wattage
	↔12	↑30						
4168757	↔12	↑30	2	gold colour	crystal	crystal	1× E14 / 40 W	40 W
4168793	↔12	↑30	2	silver colour	crystal	crystal	1× E14 / 40 W	40 W
4168774	↔12	↑30	2	gold colour	crystal	honey	1× E14 / 40 W	40 W

The SAP numbers given are for European electrical systems only. Candle dimensions differ depending on the electrical certification.

*Floor lamps*

SAP no.	Dimensions (cm)		Weight (kg)	Metal / surface finish	Glass / surface finish	Trimnings / surface finish	Light sources	Wattage
4159912	↔55	↑142	25	gold colour	crystal	crystal	5× E14 / 40 W	200 W
4160104	↔55	↑142	25	silver colour	crystal	crystal	5× E14 / 40 W	200 W
4160032	↔55	↑142	25	gold colour	crystal	honey	5× E14 / 40 W	200 W

The SAP numbers given are for European electrical systems only. Candle dimensions differ depending on the electrical certification.

GLASS ARM

VLTAVA

Chandeliers & Wall sconces



PRECIOSA



Chandeliers

SAP no.	Dimensions (cm)			Weight (kg)	Metal / surface finish	Glass / surface finish	Trimmings / surface finish	Light sources	Wattage
4105148	↔59	↑75		9	chrome	crystal	-	5× E27 / 60 W	300 W
4093362	↔75	↑54		25	chrome	crystal	-	8× E14 / 40 W	320 W
4285196	↔75	↑53		25	chrome	opal white	-	8× E14 / 40 W	320 W
4105115	↔75	↑100		25	chrome	crystal	-	8× E14 / 40 W	320 W
4105146	↔110	↑118		30	chrome	crystal	-	10× E14 / 40 W	400 W



Wall sconces

SAP no.	Dimensions (cm)			Weight (kg)	Metal / surface finish	Glass / surface finish	Trimmings / surface finish	Light sources	Wattage
4104872	↔32	↑23	↑40	2	chrome	crystal	-	2× E14 / 40 W	80 W

The SAP numbers given are for European electrical systems only. Candle dimensions differ depending on the electrical certification.

GLASS ARM

AMELIE

Chandeliers & Wall sconces



PRECIOSA



Chandeliers

SAP no.	Dimensions (cm)			Weight (kg)	Metal / surface finish	Glass / surface finish	Trimmings / surface finish	Light sources	Wattage
3246691	↔69	↑52		4	chrome	crystal	-	6× E14 / 40 W	240 W
3246711	↔69	↑52		6	chrome	crystal	-	8× E14 / 40 W	320 W



Wall sconces

SAP no.	Dimensions (cm)			Weight (kg)	Metal / surface finish	Glass / surface finish	Trimmings / surface finish	Light sources	Wattage
3246722	↔29	↑32	↑21	1	chrome	crystal	-	2× E14 / 40 W	80 W

The SAP numbers given are for European electrical systems only. Candle dimensions differ depending on the electrical certification.

GLASS ARM

AMADEUS

Chandeliers & Wall sconces



PRECIOSA



Chandeliers

SAP no.	Dimensions (cm)			Weight (kg)	Metal / surface finish	Glass / surface finish	Trimmings / surface finish	Light sources	Wattage
2989435	↔73	↑50		7	chrome	crystal	-	8× E14 / 40 W	320 W
2922955	↔100	↑70		15	chrome	crystal	-	12× E14 / 40 W	480 W



Wall sconces

SAP no.	Dimensions (cm)			Weight (kg)	Metal / surface finish	Glass / surface finish	Trimmings / surface finish	Light sources	Wattage
2988544	↔36	↑28	↑22	2	chrome	crystal	-	2× E14 / 40 W	80 W

The SAP numbers given are for European electrical systems only. Candle dimensions differ depending on the electrical certification.

GLASS ARM

LA SCALA

Chandeliers & Wall sconces



PRECIOSA



Chandeliers

SAP no.	Dimensions (cm)			Weight (kg)	Metal / surface finish	Glass / surface finish	Trimmings / surface finish	Light sources	Wattage
	↔	↑	↓						
2924683	↔60	↑68		7	chrome	crystal	-	6× E14 / 40 W	240 W
3151369	↔80	↑71		8	chrome	crystal	-	8× E14 / 40 W	320 W
3439568	↔80	↑71		10	chrome	black diamond frosted	-	8× E14 / 40 W	320 W



Wall sconces

SAP no.	Dimensions (cm)			Weight (kg)	Metal / surface finish	Glass / surface finish	Trimmings / surface finish	Light sources	Wattage
	↔	↑	↓						
2924764	↔36	↑42	↑21	1	chrome	crystal	-	2× E14 / 40 W	80 W
3439593	↔36	↑42	↑21	2	chrome	black diamond frosted	-	2× E14 / 40 W	80 W

The SAP numbers given are for European electrical systems only. Candle dimensions differ depending on the electrical certification.

GLASS ARM

ODETTA

Chandeliers & Wall sconces



PRECIOSA



Chandeliers

SAP no.	Dimensions (cm)			Weight (kg)	Metal / surface finish	Glass / surface finish	Trimmings / surface finish	Light sources	Wattage
	↔	↑	↓						
3255063	↔68	↑64		8	chrome	crystal	-	6× E14 / 40 W	240 W
3254801	↔78	↑68		10	chrome	crystal	-	8× E14 / 40 W	320 W



Wall sconces

SAP no.	Dimensions (cm)			Weight (kg)	Metal / surface finish	Glass / surface finish	Trimmings / surface finish	Light sources	Wattage
	↔	↑	↓						
3254520	↔39	↑26	↑21	2	chrome	crystal	-	2× E14 / 40 W	80 W

The SAP numbers given are for European electrical systems only. Candle dimensions differ depending on the electrical certification.

GLASS ARM

HUMPRECHT

Chandeliers & Wall sconces



PRECIOSA



Chandeliers

SAP no.	Dimensions (cm)			Weight (kg)	Metal / surface finish	Glass / surface finish	Trimmings / surface finish	Light sources	Wattage
	↔	↑	↓						
3460001	↔66	↑63		12	chrome	crystal	-	6× E14 / 40 W	240 W
3422802	↔66	↑63		12	chrome	black	-	6× E14 / 40 W	240 W
3439875	↔90	↑80		16	chrome	crystal	-	12× E14 / 40 W	480 W
3422786	↔90	↑80		21	chrome	black	-	12× E14 / 40 W	480 W



Wall sconces

SAP no.	Dimensions (cm)			Weight (kg)	Metal / surface finish	Glass / surface finish	Trimmings / surface finish	Light sources	Wattage
	↔	↑	↓						
3460010	↔40	↑40	↑24	3	chrome	crystal	-	2× E14 / 40 W	80 W
3422788	↔40	↑40	↑24	3	chrome	black	-	2× E14 / 40 W	80 W

The SAP numbers given are for European electrical systems only. Candle dimensions differ depending on the electrical certification.

GLASS ARM

TOURBILLON

Chandeliers



PRECIOSA



Chandeliers

SAP no.	Dimensions (cm)		Weight (kg)	Metal / surface finish	Glass / surface finish	Trimmings / surface finish	Light sources	Wattage
3441186	↔75	↑45	8	chrome	crystal	-	8× G9 / 33 W	264 W
3878683	↔87	↑120	12	chrome	crystal	-	8× G9 / 33 W	264 W
3439869	↔105	↑41	10	chrome	crystal	-	12× G9 / 33 W	396W

BRILLIANT

1196

Ceiling chandeliers



PRECIOSA



Ceiling chandeliers

SAP no.	Dimensions (cm)		Weight (kg)	Metal / surface finish	Glass / surface finish	Trimmings / surface finish	Light sources	Wattage
3423343	↔60	↑32	8	chrome	-	crystal	6× E14 / 40 W	240 W
3403720	↔60	↑32	8	polished brass	-	crystal	6× E14 / 40 W	240 W
3868161	↔80	↑33	11	polished nickel	-	crystal	12× E14 / 40 W	480 W
3459282	↔80	↑33	11	polished brass	-	crystal	12× E14 / 40 W	480 W

The SAP numbers given are for European electrical systems only. Candle dimensions differ depending on the electrical certification.

BRILLIANT

0524/BORDURA

Ceiling chandeliers



PRECIOSA



Ceiling chandeliers

SAP no.	Dimensions (cm)		Weight (kg)	Metal / surface finish	Glass / surface finish	Trimmings / surface finish	Light sources	Wattage
3300534	↔33	↑31	2	polished nickel	-	crystal	3× E14 / 40 W	120 W
3300589	↔33	↑31	2	polished brass	-	crystal	3× E14 / 40 W	120 W
3300247	↔43	↑28	4	polished nickel	-	crystal	6× E14 / 40 W	240 W
3300248	↔43	↑28	4	polished brass	-	crystal	6× E14 / 40 W	240 W

The SAP numbers given are for European electrical systems only. Candle dimensions differ depending on the electrical certification.

BRILLIANT

0933

Ceiling chandeliers & Wall sconces



PRECIOSA



Ceiling chandeliers

SAP no.	Dimensions (cm)			Weight (kg)	Metal / surface finish	Glass / surface finish	Trimmings / surface finish	Light sources	Wattage
3308165*	↔40	↑39		3	polished brass	-	crystal	4× E14 / 40 W	160 W
10163 *	↔40	↑65		5	polished brass	-	crystal	6× E14 / 40 W	240 W

Suspension - * rod | * chain



Wall sconces

SAP no.	Dimensions (cm)			Weight (kg)	Metal / surface finish	Glass / surface finish	Trimmings / surface finish	Light sources	Wattage
11744	↔25	↑21	↑13	1	polished brass	-	crystal	2× E14 / 40 W	80 W

The SAP numbers given are for European electrical systems only. Candle dimensions differ depending on the electrical certification.

BRILLIANT

1216 / HELIX

Ceiling chandeliers & Ceiling lamps & Wall sconces



PRECIOSA



Ceiling chandeliers

SAP no.	Dimensions (cm)		Weight (kg)	Metal / surface finish	Glass / surface finish	Trimmings / surface finish	Light sources	Wattage
3868160	↔50	↑135	21	polished nickel	-	crystal	13× E14 / 40 W	520 W
3459470	↔50	↑135	21	polished brass	-	crystal	13× E14 / 40 W	520 W
4014316	↔60	↑160	30	polished nickel	-	crystal	16× E14 / 40 W	640 W
3459449	↔60	↑155	31	polished brass	-	crystal	16× E14 / 40 W	640 W
4159726	↔80	↑250	50	polished nickel	-	crystal	28× E14 / 40 W	1120 W
4159823	↔80	↑250	50	polished brass	-	crystal	28× E14 / 40 W	1120 W

The SAP numbers given are for European electrical systems only. Candle dimensions differ depending on the electrical certification.



Ceiling lamps

SAP no.	Dimensions (cm)		Weight (kg)	Metal / surface finish	Glass / surface finish	Trimmings / surface finish	Light sources	Wattage
4174724	↔50	↑130	25	polished nickel	-	crystal	13× E14 / 40 W	520 W
4174717	↔50	↑130	25	polished brass	-	crystal	13× E14 / 40 W	520 W
4174476	↔60	↑155	30	polished nickel	-	crystal	16× E14 / 40 W	640 W
4174484	↔60	↑155	30	polished brass	-	crystal	16× E14 / 40 W	640 W
4173586	↔80	↑250	50	polished nickel	-	crystal	28× E14 / 40 W	1120 W
4173609	↔80	↑250	50	polished brass	-	crystal	28× E14 / 40 W	1120 W

The SAP numbers given are for European electrical systems only. Candle dimensions differ depending on the electrical certification.

*Wall sconces*

SAP no.	Dimensions (cm)			Weight (kg)	Metal / surface finish	Glass / surface finish	Trimmings / surface finish	Light sources	Wattage
3865738	↔25	↑64	↑26	4	polished nickel	-	crystal	3× E14 / 40 W	120 W
3460334	↔25	↑64	↑26	4	polished brass	-	crystal	3× E14 / 40 W	120 W

The SAP numbers given are for European electrical systems only. Candle dimensions differ depending on the electrical certification.

BRILLIANT

1049 / ROSCA

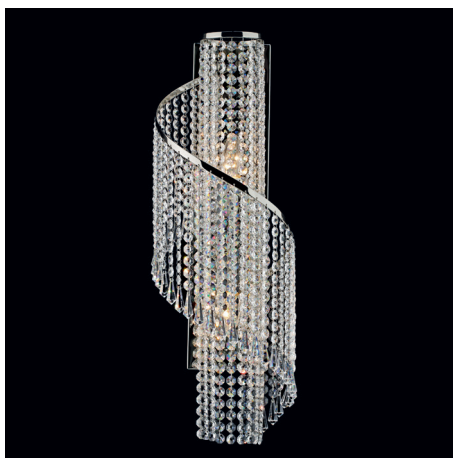
Wall sconces



184

WB 1049/01/C
DIMENSIONS: Ø 22 cm
WEIGHT: 4,6 kg
WATTAGE: 2x E14-40
METAL FINISH: POLI
COLOR OF GLASS: NO
TRIMMINGS: STAND
PRODUCTION NUMBER
25 1049 002 07

PRECIOSA



Wall sconces

SAP no.	Dimensions (cm)			Weight (kg)	Metal / surface finish	Glass / surface finish	Trimmings / surface finish	Light sources	Wattage
	↔22	↑62	↑22						
3174142	↔22	↑62	↑22	5	polished nickel	-	crystal	2× E14 / 40 W	80 W
3176776	↔22	↑62	↑22	5	polished brass	-	crystal	2× E14 / 40 W	80 W



Wall sconces

SAP no.	Dimensions (cm)			Weight (kg)	Metal / surface finish	Glass / surface finish	Trimmings / surface finish	Light sources	Wattage
	↔22	↑62	↑22						
4064611	↔22	↑62	↑22	5	polished nickel	-	crystal	2× E14 / 40 W	80 W
4064597	↔22	↑62	↑22	5	polished brass	-	crystal	2× E14 / 40 W	80 W

The SAP numbers given are for European electrical systems only. Candle dimensions differ depending on the electrical certification.

BRILLIANT

1030 / TAMBOUR

Ceiling chandeliers & Wall sconces



PRECIOSA



Ceiling chandeliers

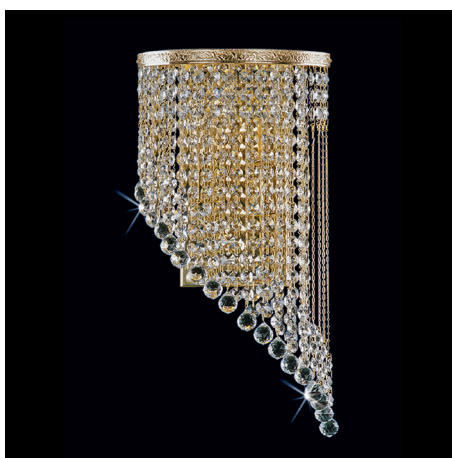
SAP no.	Dimensions (cm)		Weight (kg)	Metal / surface finish	Glass / surface finish	Trimmings / surface finish	Light sources	Wattage
4114178	↔60	↑45	10	polished nickel	mirror	crystal	8× E14 / 40 W	320 W
3311209	↔60	↑45	10	polished brass	mirror	crystal	8× E14 / 40 W	320 W

The SAP numbers given are for European electrical systems only. Candle dimensions differ depending on the electrical certification.



Wall sconces

SAP no.	Dimensions (cm)			Weight (kg)	Metal / surface finish	Glass / surface finish	Trimmings / surface finish	Light sources	Wattage
	↔21	↑40	↑11						
V240160	↔21	↑40	↑11	3	polished nickel	-	crystal	2× E14 / 40 W	80 W
V238927	↔21	↑40	↑11	3	polished brass	-	crystal	2× E14 / 40 W	80 W



Wall sconces

SAP no.	Dimensions (cm)			Weight (kg)	Metal / surface finish	Glass / surface finish	Trimmings / surface finish	Light sources	Wattage
	↔21	↑40	↑11						
V239977	↔21	↑40	↑11	3	polished nickel	-	crystal	2× E14 / 40 W	80 W
V238496	↔21	↑40	↑11	3	polished brass	-	crystal	2× E14 / 40 W	80 W

The SAP numbers given are for European electrical systems only. Candle dimensions differ depending on the electrical certification.

BRILLIANT

0775

Ceiling chandeliers



PRECIOSA



Ceiling chandeliers

SAP no.	Dimensions (cm)		Weight (kg)	Metal / surface finish	Glass / surface finish	Trimmings / surface finish	Light sources	Wattage
4001254	↔35	↑35	4	polished brass	-	crystal	1× E27 / 60 W	60 W
11540	↔35	↑40	3	polished brass	-	crystal	1× E27 / 40 W	40 W
10139	↔42	↑64	5	polished brass	-	crystal	7× E14 / 40 W	280 W
11549	↔55	↑116	13	polished brass	-	crystal	13× E14 / 40 W	520 W

The SAP numbers given are for European electrical systems only. Candle dimensions differ depending on the electrical certification.

BRILLIANT

0721 / BROLLY

Ceiling chandeliers & Wall sconces



PRECIOSA



Ceiling chandeliers

SAP no.	Dimensions (cm)			Weight (kg)	Metal / surface finish	Glass / surface finish	Trimmings / surface finish	Light sources	Wattage
3221801	↔42	↑23	↑0	2	polished nickel	-	crystal	3× E14 / 40 W	120 W
10126	↔42	↑23	↑0	2	polished brass	-	crystal	3× E14 / 40 W	120 W
3221780	↔51	↑32	↑51	3	polished nickel	-	crystal	6× E14 / 40 W	240 W
10125	↔51	↑32	↑51	3	polished brass	-	crystal	6× E14 / 40 W	240 W
3221856	↔61	↑31	↑0	5	polished nickel	-	crystal	9× E14 / 40 W	360 W
11463	↔61	↑31	↑0	5	polished brass	-	crystal	9× E14 / 40 W	360 W

The SAP numbers given are for European electrical systems only. Candle dimensions differ depending on the electrical certification.



*V241181

Wall sconces

SAP no.	Dimensions (cm)			Weight (kg)	Metal / surface finish	Glass / surface finish	Trimmings / surface finish	Light sources	Wattage
V240742	↔17	↑20	↑5	2	polished nickel	-	crystal	1× E14 / 40 W	40 W
V241155	↔17	↑20	↑5	2	polished brass	-	crystal	1× E14 / 40 W	40 W
V241812	↔17	↑20	↑6	2	polished nickel	-	crystal	1× E14 / 40 W	40 W
V241181*	↔17	↑20	↑6	2	polished brass	-	crystal	1× E14 / 40 W	40 W

The SAP numbers given are for European electrical systems only. Candle dimensions differ depending on the electrical certification.

BRILLIANT

0915

Ceiling chandeliers & Wall sconces

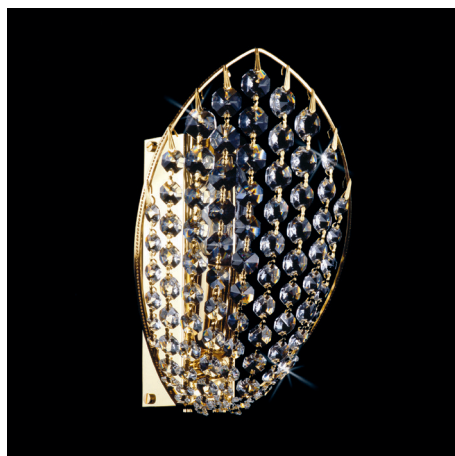


PRECIOSA



Ceiling chandeliers

SAP no.	Dimensions (cm)			Weight (kg)	Metal / surface finish	Glass / surface finish	Trimmings / surface finish	Light sources	Wattage
13512	↔50	↑30		3	polished brass	-	crystal	6× E14 / 40 W	240 W



Wall sconces

SAP no.	Dimensions (cm)			Weight (kg)	Metal / surface finish	Glass / surface finish	Trimmings / surface finish	Light sources	Wattage
V242269	↔13	↑21	↑14	1	polished brass	-	crystal	1× E14 / 40 W	40 W

The SAP numbers given are for European electrical systems only. Candle dimensions differ depending on the electrical certification.

BRILLIANT

3202

Ceiling chandeliers



PRECIOSA



Ceiling chandeliers

SAP no.	Dimensions (cm)		Weight (kg)	Metal / surface finish	Glass / surface finish	Trimmings / surface finish	Light sources	Wattage
3308039	↔55	↑34	4	polished brass	-	crystal	6× E14 / 60 W	240 W
3308042	↔70	↑32	5	polished brass	-	crystal	9× E14 / 40 W	360 W
3463834	↔90	↑47	4	polished brass	-	crystal	12× E14 / 40 W	480 W

The SAP numbers given are for European electrical systems only. Candle dimensions differ depending on the electrical certification.

BRILLIANT

3449

Chandeliers



PRECIOSA



Chandeliers

SAP no.	Dimensions (cm)		Weight (kg)	Metal / surface finish	Glass / surface finish	Trimmings / surface finish	Light sources	Wattage
4124035	↔50	↑50	5	polished brass	crystal	crystal	6× E14 / 40 W	240 W

The SAP numbers given are for European electrical systems only. Candle dimensions differ depending on the electrical certification.

BRILLIANT

0590

Chandeliers & Wall sconces



PRECIOSA



Chandeliers

SAP no.	Dimensions (cm)			Weight (kg)	Metal / surface finish	Glass / surface finish	Trimmings / surface finish	Light sources	Wattage
	↔	↑	↓						
4123999	↔47	↑49		5	polished brass	crystal	crystal	6× E14 / 40 W	240 W
4124005	↔68	↑60		8	polished brass	crystal	crystal	12× E14 / 40 W	480 W
2928628	↔95	↑80		16	polished brass	crystal	crystal	21× E14 / 40 W	840 W



Wall sconces

SAP no.	Dimensions (cm)			Weight (kg)	Metal / surface finish	Glass / surface finish	Trimmings / surface finish	Light sources	Wattage
	↔	↑	↓						
V242085	↔13	↑26	↑21	2	polished brass	crystal	crystal	1× E14 / 40 W	40 W
V242410	↔36	↑24	↑17	3	polished brass	crystal	crystal	2× E14 / 40 W	80 W

The SAP numbers given are for European electrical systems only. Candle dimensions differ depending on the electrical certification.

BRILLIANT

0952

Chandeliers & Wall sconces



PRECIOSA



Chandeliers

SAP no.	Dimensions (cm)			Weight (kg)	Metal / surface finish	Glass / surface finish	Trimmings / surface finish	Light sources	Wattage
4001847	↔50	↑37		5	polished brass	crystal	crystal	6× E14 / 40 W	240 W
4004179	↔65	↑46		9	polished brass	crystal	crystal	10× E14 / 40 W	400 W
4001645	↔87	↑57		11	polished brass	crystal	crystal	12× E14 / 40 W	480 W



Wall sconces

SAP no.	Dimensions (cm)			Weight (kg)	Metal / surface finish	Glass / surface finish	Trimmings / surface finish	Light sources	Wattage
V242073	↔24	↑19	↑35	3	polished brass	crystal	crystal	2× E14 / 40 W	80 W

The SAP numbers given are for European electrical systems only. Candle dimensions differ depending on the electrical certification.

BRILLIANT

0798 / FRATERNITE

Chandeliers & Wall sconces



PRECIOSA



Chandeliers

SAP no.	Dimensions (cm)			Weight (kg)	Metal / surface finish	Glass / surface finish	Trimmings / surface finish	Light sources	Wattage
	↔	↑	↓						
11579	↔44	↑34		4	polished brass	crystal	crystal	5× E14 / 40 W	200 W
4124021	↔54	↑48		6	polished brass	crystal	crystal	8× E14 / 40 W	320 W
4124033	↔66	↑50		8	polished brass	crystal	crystal	12× E14 / 40 W	480 W



Wall sconces

SAP no.	Dimensions (cm)			Weight (kg)	Metal / surface finish	Glass / surface finish	Trimmings / surface finish	Light sources	Wattage
	↔	↑	↓						
V242540	↔33	↑18	↑17	1	polished brass	crystal	crystal	2× E14 / 40 W	80 W

The SAP numbers given are for European electrical systems only. Candle dimensions differ depending on the electrical certification.

BRILLIANT

1081

Ceiling chandeliers & Wall sconces



PRECIOSA



Ceiling chandeliers

SAP no.	Dimensions (cm)			Weight (kg)	Metal / surface finish	Glass / surface finish	Trimmings / surface finish	Light sources	Wattage
3305183	↔52	↑32		8	polished brass	-	crystal	6× E14 / 40 W	240 W
3310946	↔74	↑44		10	polished brass	-	crystal	9× E14 / 40 W	360 W



Wall sconces

SAP no.	Dimensions (cm)			Weight (kg)	Metal / surface finish	Glass / surface finish	Trimmings / surface finish	Light sources	Wattage
V241201	↔36	↑22	↑0	4	polished brass	-	crystal	2× E14 / 40 W	80 W

The SAP numbers given are for European electrical systems only. Candle dimensions differ depending on the electrical certification.

BRILLIANT

0991

Ceiling chandeliers



PRECIOSA



Ceiling chandeliers

SAP no.	Dimensions (cm)		Weight (kg)	Metal / surface finish	Glass / surface finish	Trimmings / surface finish	Light sources	Wattage
3307880	↔40	↑34	3	polished nickel	-	crystal	4× E14 / 40 W	160 W
3307926	↔40	↑34	3	polished brass	-	crystal	4× E14 / 40 W	160 W
3305190	↔50	↑40	5	polished nickel	mirror	crystal	6× E14 / 40 W	240 W
3305186	↔50	↑40	5	polished brass	mirror	crystal	6× E14 / 40 W	240 W

The SAP numbers given are for European electrical systems only. Candle dimensions differ depending on the electrical certification.

BRILLIANT

3305

Wall sconces



PRECIOSA



Wall sconces

SAP no.	Dimensions (cm)			Weight (kg)	Metal / surface finish	Glass / surface finish	Trimmings / surface finish	Light sources	Wattage
V242534	↔20	↑33	↑10	1	polished brass	-	crystal	2× E14 / 40 W	80 W

BRILLIANT

0914

Ceiling chandeliers & Wall sconces



PRECIOSA



Ceiling chandeliers

SAP no.	Dimensions (cm)		Weight (kg)	Metal / surface finish	Glass / surface finish	Trimmings / surface finish	Light sources	Wattage
3307935	↔43	↑45	4	polished nickel	-	crystal	4× E14 / 40 W	160 W
3307961	↔43	↑45	4	polished brass	-	crystal	4× E14 / 40 W	160 W
3222008	↔43	↑31	4	polished nickel	-	crystal	6× E14 / 40 W	240 W
11685	↔43	↑31	4	polished brass	-	crystal	6× E14 / 40 W	240 W
3308774	↔70	↑51	10	polished nickel	-	crystal	9× E14 / 40 W	360 W
3308803	↔70	↑51	10	polished brass	-	crystal	9× E14 / 40 W	360 W

The SAP numbers given are for European electrical systems only. Candle dimensions differ depending on the electrical certification.



Wall sconces

SAP no.	Dimensions (cm)			Weight (kg)	Metal / surface finish	Glass / surface finish	Trimmings / surface finish	Light sources	Wattage
V243394	↔24	↑23	↑14	3	polished nickel	-	crystal	2× E14 / 40 W	80 W
V243089	↔24	↑23	↑14	3	polished brass	-	crystal	2× E14 / 40 W	80 W

The SAP numbers given are for European electrical systems only. Candle dimensions differ depending on the electrical certification.

BRILLIANT

0757

Ceiling chandeliers & Wall sconces



PRECIOSA



Ceiling chandeliers

SAP no.	Dimensions (cm)			Weight (kg)	Metal / surface finish	Glass / surface finish	Trimmings / surface finish	Light sources	Wattage
	↔	↑	↓						
3300400	↔48	↑45		5	polished nickel	-	crystal	6× E14 / 40 W	240 W
3300391	↔48	↑45		6	polished brass	-	crystal	6× E14 / 40 W	240 W



Wall sconces

SAP no.	Dimensions (cm)			Weight (kg)	Metal / surface finish	Glass / surface finish	Trimmings / surface finish	Light sources	Wattage
	↔	↑	↓						
V243530	↔20	↑21	↑10	1	polished nickel	-	crystal	2× E14 / 40 W	80 W
V243876	↔20	↑21	↑10	1	polished brass	-	crystal	2× E14 / 40 W	80 W

The SAP numbers given are for European electrical systems only. Candle dimensions differ depending on the electrical certification.

BRILLIANT

3713

Ceiling chandeliers



PRECIOSA



Ceiling chandeliers

SAP no.	Dimensions (cm)		Weight (kg)	Metal / surface finish	Glass / surface finish	Trimmings / surface finish	Light sources	Wattage
	↔	↑						
3251544	↔15	↑29	1	polished nickel	crystal	crystal	1× E27 / 40 W	40 W
3251546	↔15	↑29	1	polished brass	crystal	crystal	1× E27 / 40 W	40 W



Ceiling chandeliers

SAP no.	Dimensions (cm)		Weight (kg)	Metal / surface finish	Glass / surface finish	Trimmings / surface finish	Light sources	Wattage
	↔	↑						
3457985	↔15	↑30	1	polished nickel	crystal	crystal	1× E27 / 40 W	40 W
3457990	↔15	↑30	1	polished brass	crystal	crystal	1× E27 / 40 W	40 W

The SAP numbers given are for European electrical systems only. Candle dimensions differ depending on the electrical certification.

BRILLIANT

3029 / CVIKOV

Ceiling chandeliers



PRECIOSA



Ceiling chandeliers

SAP no.	Dimensions (cm)		Weight (kg)	Metal / surface finish	Glass / surface finish	Trimmings / surface finish	Light sources	Wattage
3250116	↔20	↑35	3	chrome	crystal	crystal	1× E27 / 60 W	60 W
3250232	↔25	↑39	4	chrome	crystal	crystal	1× E27 / 60 W	60 W

The SAP numbers given are for European electrical systems only. Candle dimensions differ depending on the electrical certification.

BRILLIANT

5004 / FLOE

Ceiling chandeliers & Ceiling lamps



PRECIOSA



Ceiling chandeliers

SAP no.	Dimensions (cm)		Weight (kg)	Metal / surface finish	Glass / surface finish	Trimmings / surface finish	Light sources	Wattage
3973602	↔60	↑52	13	chrome	crystal frosted	crystal	6× G9 / 33 W	198 W



Ceiling chandeliers

SAP no.	Dimensions (cm)		Weight (kg)	Metal / surface finish	Glass / surface finish	Trimmings / surface finish	Light sources	Wattage
3976553	↔80	↑45	20	chrome	crystal	crystal	9× E14 / 40 W	360 W

The SAP numbers given are for European electrical systems only. Candle dimensions differ depending on the electrical certification.



Ceiling lamps

SAP no.	Dimensions (cm)		Weight (kg)	Metal / surface finish	Glass / surface finish	Trimmings / surface finish	Light sources	Wattage
4175282	↔80	↑41	20	chrome	crystal	crystal	10× E14 / 40 W	400 W

The SAP numbers given are for European electrical systems only. Candle dimensions differ depending on the electrical certification.

PRECIOSA